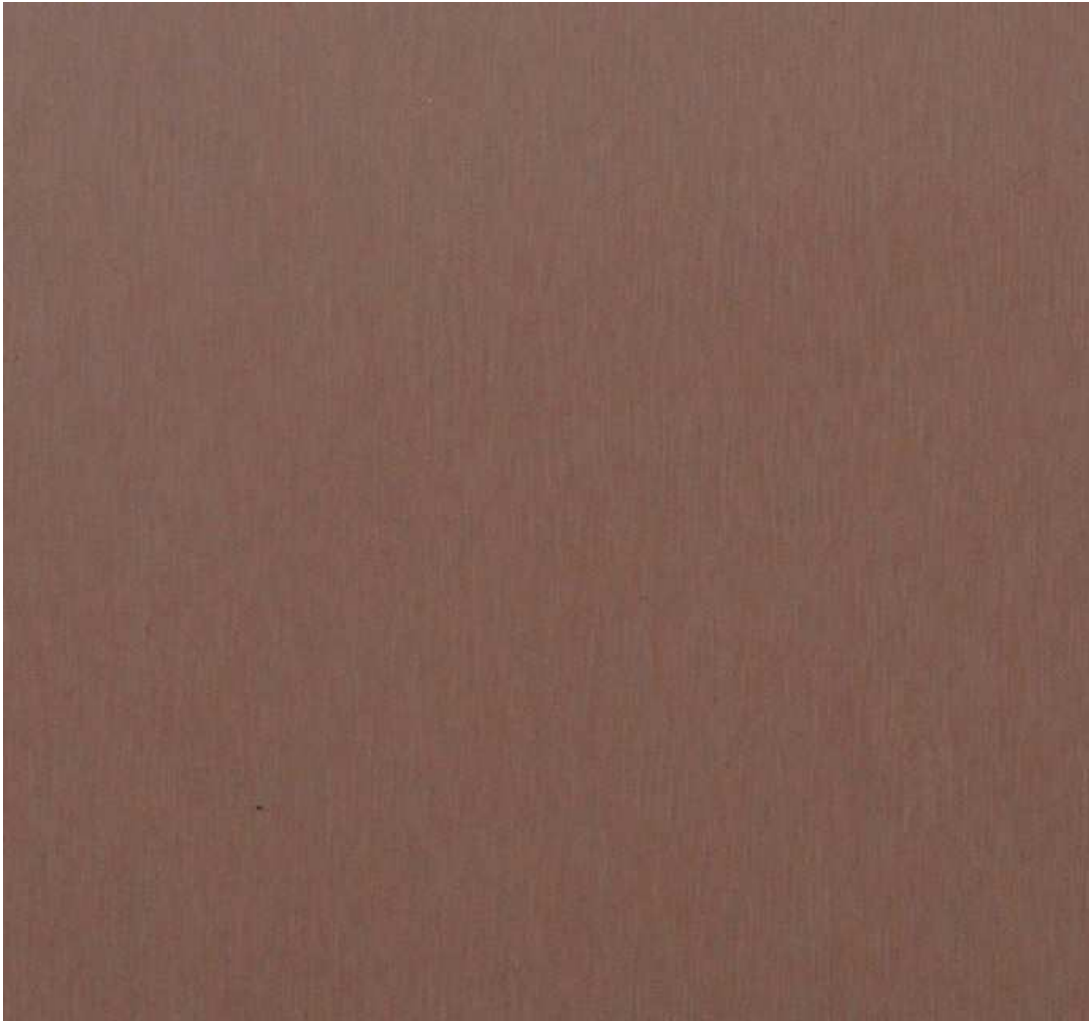


In accepting and utilising this document the recipient agrees that SJB Architecture (NSW) Pty. Ltd. ACN 081 094 724 T/A SJB Architects, retain all common law, statutory law and other rights including copyright and intellectual property rights. The recipient agrees not to use this document for any purpose other than its intended use; to waive all claims against SJB Architects resulting from unauthorised changes, or to reuse the document on other projects without the prior written consent of SJB Architects. Under no circumstances shall transfer of this document be deemed a sale. SJB Architects makes no warranties of fitness for any purpose. The Builder/Contractor shall verify job dimensions prior to any work commencing. Use figured dimensions only. Do not scale drawings.

Nominated Architects: Adam Haddow-7188 | John Pradel-7004

FOR APPROVAL

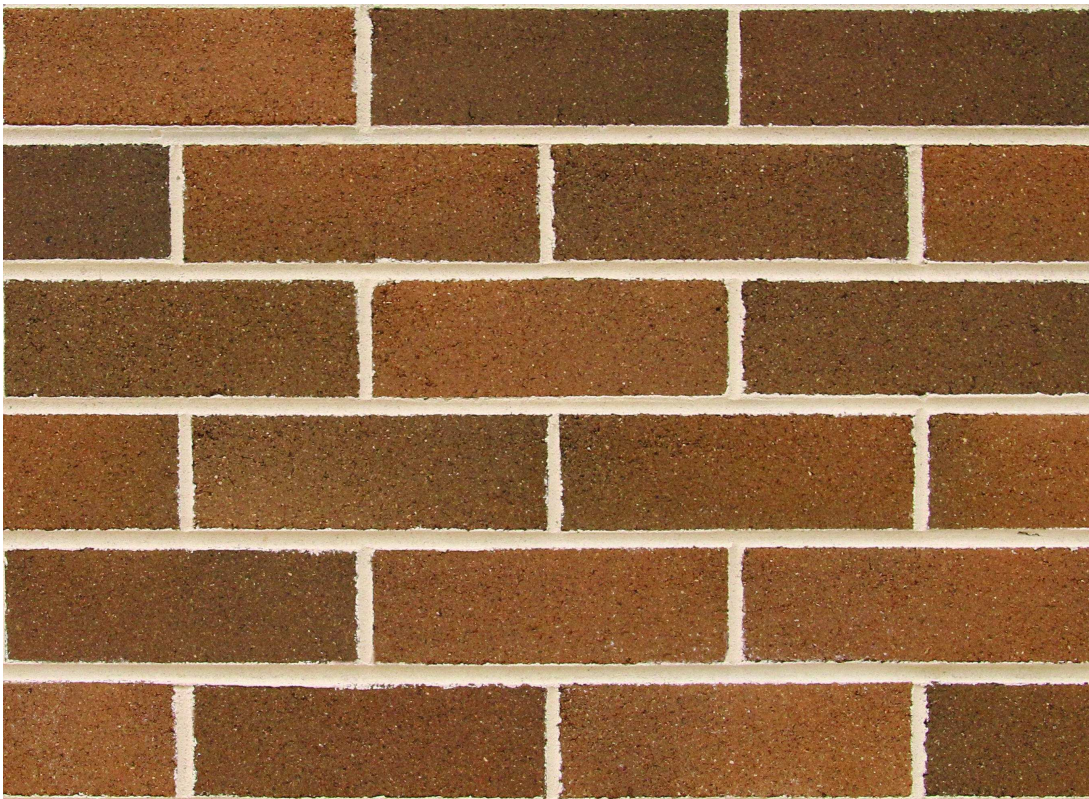
Rev	Date	Revision	By	Chk.
1	27.08.2020	For DA	JS	WG



Metal Sheet Roof
Supplier: Colourbond or similar
Finish/ Colour: Manor Red or similar



Timber framed windows
Material:WRC or similar
Finish/ Colour: Clear Oil



Face Brickwork
Supplier:Bowral Bricks or Similar
Finish/ Colour: Bowral Brown/ Gertrudis Mix or Similar



Landscape and Garden treatment
In accordance with Arcadia Landscape plan

Client

Ashbury FMBM Pty Ltd

Project

Milton Street

149-163 Milton Street
Ashbury NSW
2193

Drawing Name

Materials and Finishes-Milton Street
Facade

Date	Scale	Sheet Size
27.08.2020		@ A1

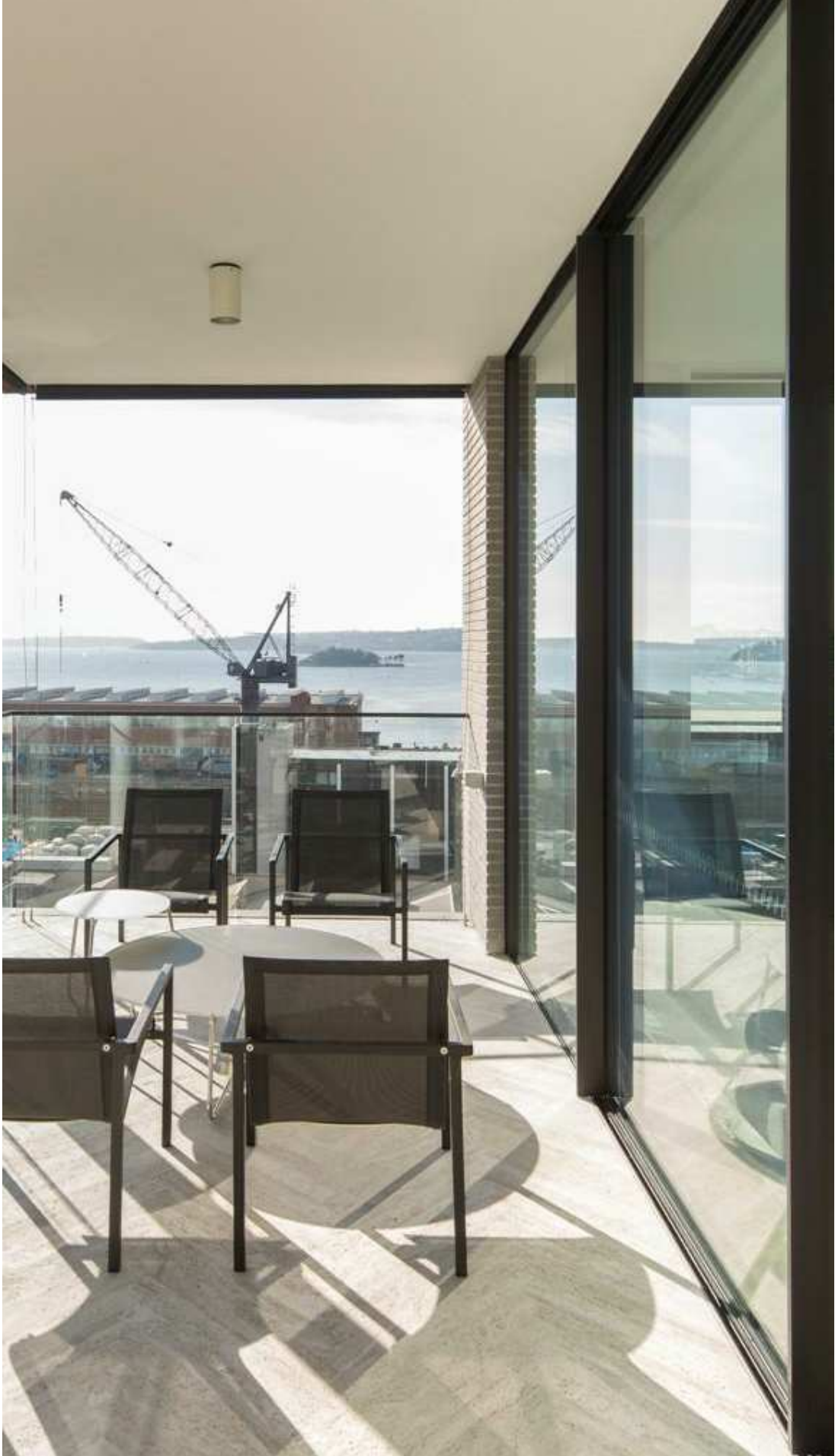
Drawn	Chk.
JS	WG

Job No.	Drawing No.	Revision
6119	DA-2201	/ 1

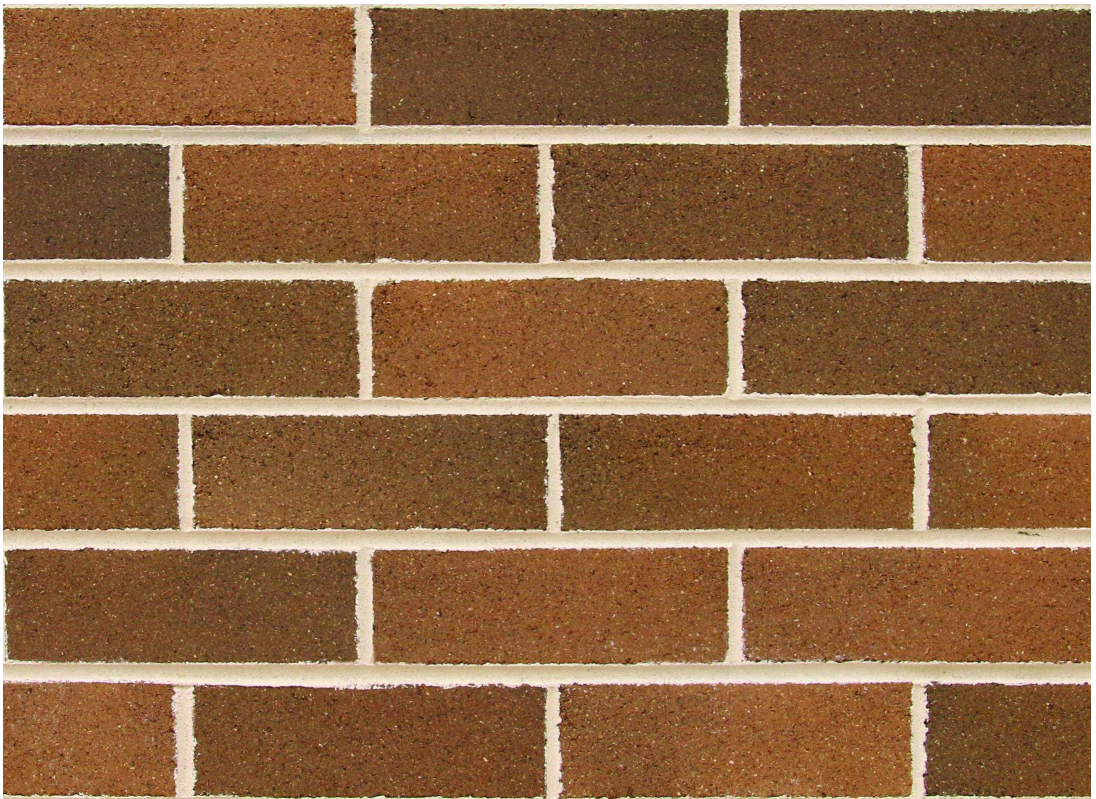
- Materials Legend**
- AFW Aluminium Framed Window
 - AFN Aluminium Fin
 - BWK Face Brickwork
 - (1) Stretcher Course
 - (2) Soldier Course
 - (3) Stack Course
 - MB Metal Balustrade
 - MSR Metal Sheet Roof
 - RC Concrete Structure
 - SIL Concrete Sill + Handrail
 - TFW Timber Framed Window/Door
 - TPF Timber Palisade Fence/Gate

SJB Architects
Level 2
490 Crown Street
Surry Hills NSW
2010 Australia
T 61 2 9380 9911
F 61 2 9380 9922
www.sjb.com.au





Aluminium framed windows
Material:Aluminium
Finish/ Colour: Powdercoat. Dark Grey



Face Brickwork
Supplier:Bowral Bricks or Similar
Finish/ Colour: Bowral Brown/ Gertrudis Mix or Similar



Landscape and Garden treatment
In accordance with Arcadia Landscape plan

In accepting and utilising this document the recipient agrees that SJB Architecture (NSW) Pty. Ltd. ACN 081 094 724 T/A SJB Architects, retain all common law, statutory law and other rights including copyright and intellectual property rights. The recipient agrees not to use this document for any purpose other than its intended use; to waive all claims against SJB Architects resulting from unauthorised changes; or to reuse the document on other projects without the prior written consent of SJB Architects. Under no circumstances shall transfer of this document be deemed a sale. SJB Architects makes no warranties of fitness for any purpose. The Builder/Contractor shall verify job dimensions prior to any work commencing. Use figured dimensions only. Do not scale drawings.

Nominated Architects: Adam Haddow-7188 | John Pradel-7004

FOR APPROVAL

Rev	Date	Revision	By	Chk.
1	28.07.2020	For Coordination	JS	WG
2	27.08.2020	For DA	JS	WG

Client

Ashbury FMBM Pty Ltd

Project

Milton Street

149-163 Milton Street
Ashbury NSW
2193

Drawing Name

Materials and Finishes-Terraces
A+E

Date	Scale	Sheet Size
27.08.2020		@ A1

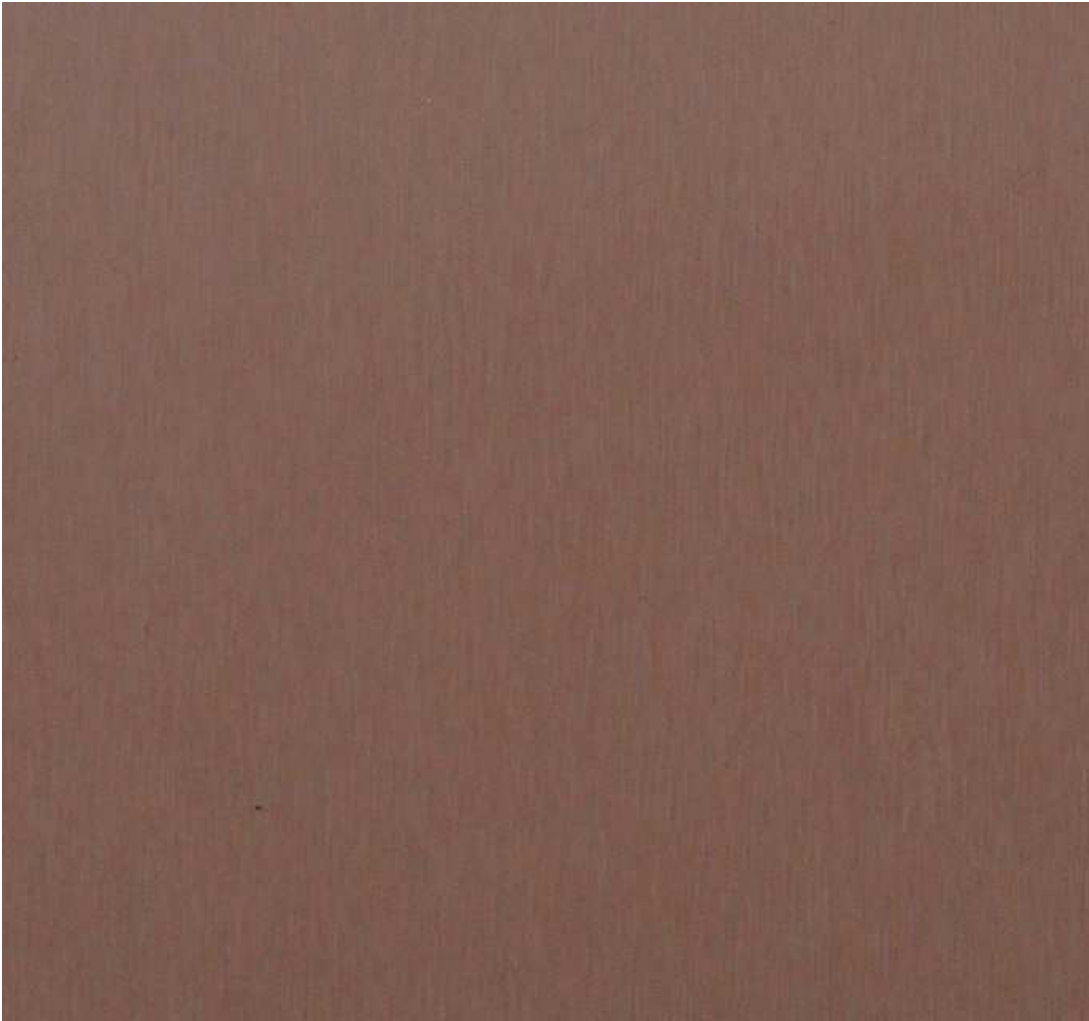
Drawn	Chk.
JS	WG

Job No.	Drawing No.	Revision
6119	DA-2202	/ 2

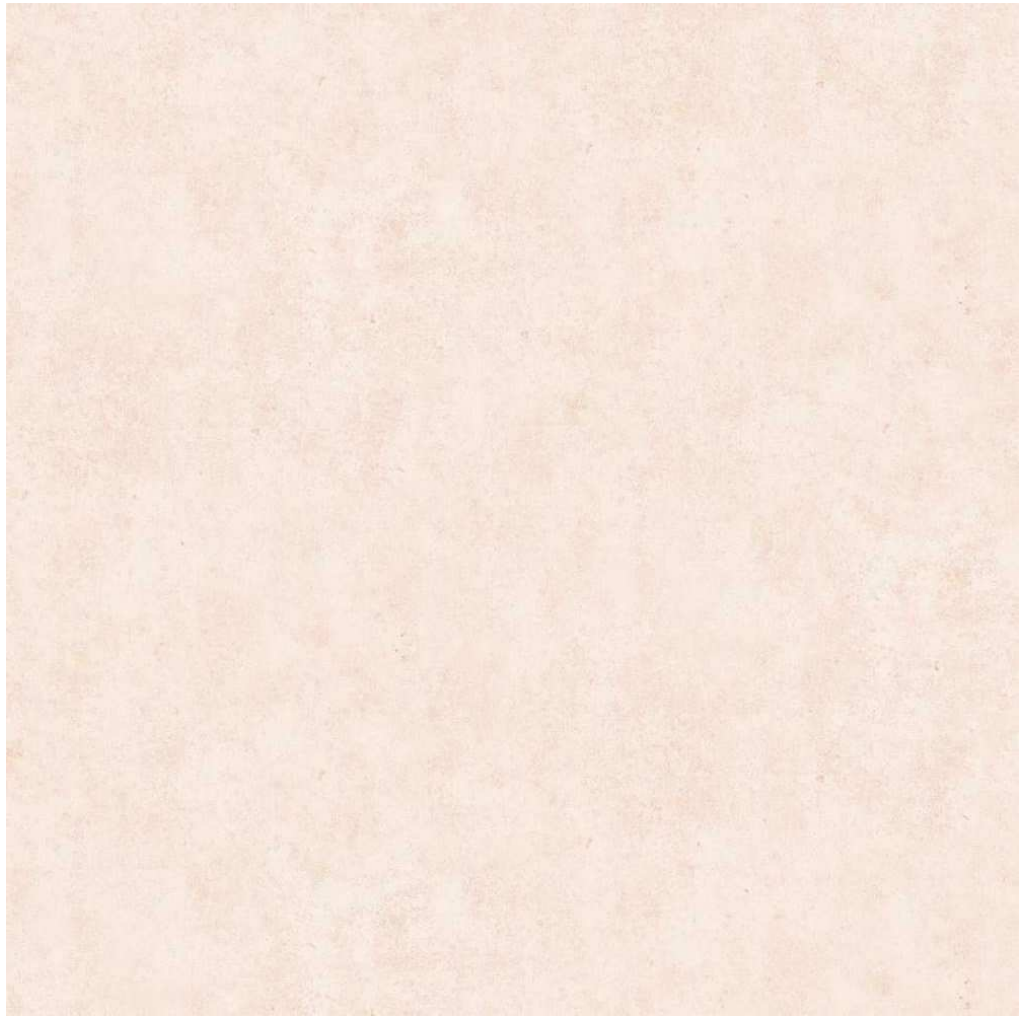
- Materials Legend**
- AFW Aluminium Framed Window
 - AFN Aluminium Fin
 - BWK Face Brickwork
 - (1) Stretcher Course
 - (2) Soldier Course
 - (3) Stack Course
 - MB Metal Balustrade
 - MSR Metal Sheet Roof
 - RC Concrete Structure
 - SIL Concrete Sill + Handrail
 - TFW Timber Framed Window/Door
 - TPF Timber Palisade Fence/Gate

SJB Architects
Level 2
490 Crown Street
Surry Hills NSW
2010 Australia
T 61 2 9380 9911
F 61 2 9380 9922
www.sjb.com.au





Metal Sheet Roof
Supplier: Colourbond or similar
Finish/ Colour: Manor Red or similar



Sill to Balcony/Terrace
Material - Masonry
Finish - Kiems or Similar (Off white/pink tone from brickwork)



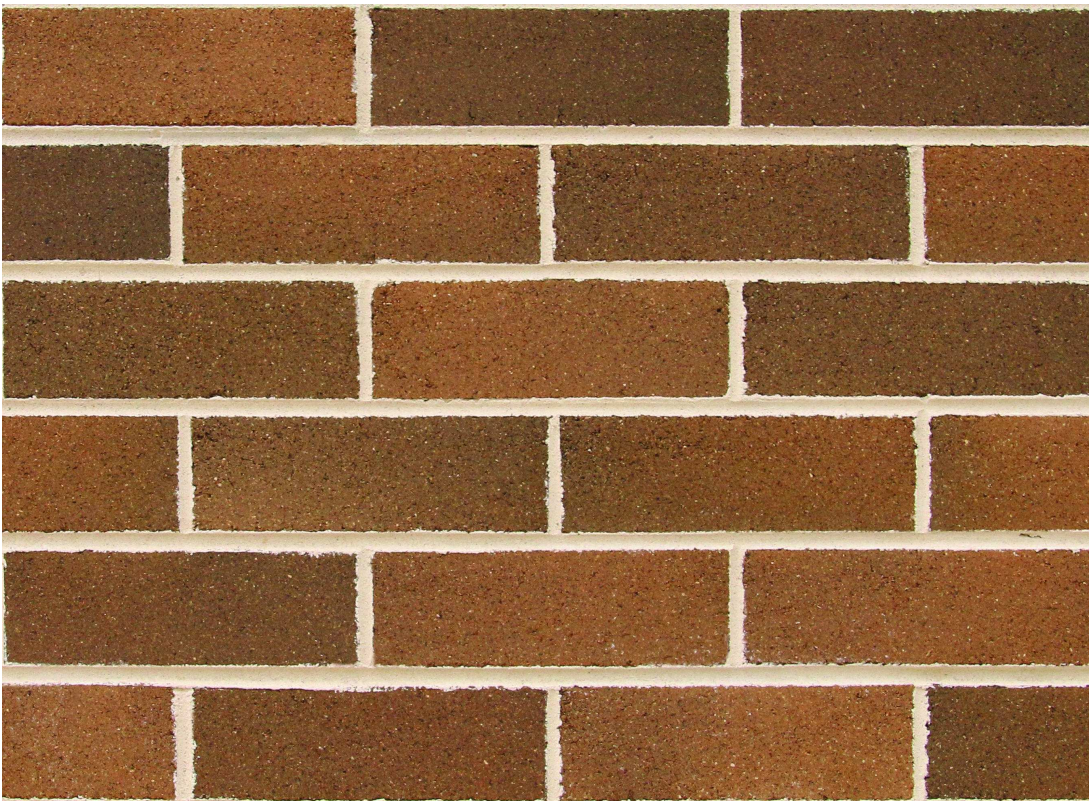
Aluminium framed windows
Material:Aluminium
Finish/ Colour: Powdercoat, Dark Grey



Aluminium Window Fin
Material:Aluminium
Finish/ Colour: Powdercoat, Pink/ red tone from brickwork



Face Brickwork Detail
Spandrel Panel and Ground Floor
Brick Soldier Course



Face Brickwork
Supplier:Bowral Bricks or Similar
Finish/ Colour: Bowral Brown/ Gertrudis Mix or Similar

- Materials Legend**
- AFW Aluminium Framed Window
 - AFN Aluminium Fin
 - BWK Face Brickwork
 - (1) Stretcher Course
 - (2) Soldier Course
 - (3) Stack Course
 - MB Metal Balustrade
 - MSR Metal Sheet Roof
 - RC Concrete Structure
 - SIL Concrete Sill + Handrail
 - TFW Timber Framed Window/Door
 - TPF Timber Palisade Fence/Gate

In accepting and utilising this document the recipient agrees that SJB Architecture (NSW) Pty. Ltd. ACN 081 094 724 T/A SJB Architects, retain all common law, statutory law and other rights including copyright and intellectual property rights. The recipient agrees not to use this document for any purpose other than its intended use; to waive all claims against SJB Architects resulting from unauthorised changes, or to reuse the document on other projects without the prior written consent of SJB Architects. Under no circumstances shall transfer of this document be deemed a sale. SJB Architects makes no warranties of fitness for any purpose. The Builder/Contractor shall verify job dimensions prior to any work commencing. Use figured dimensions only. Do not scale drawings.

Nominated Architects: Adam Haddow-7188 | John Pradel-7004

FOR APPROVAL

Rev	Date	Revision	By	Chk.
1	28.07.2020	For Coordination	JS	WG
2	27.08.2020	For DA	JS	WG

Client

Ashbury FMBM Pty Ltd

Project

Milton Street

**149-163 Milton Street
Ashbury NSW
2193**

Drawing Name

**Materials and Finishes-Building
B+C**

Date 27.08.2020 Scale @ A1

Drawn JS Chk. WG

Job No. 6119 Drawing No. DA-2203 Revision / 2

SJB Architects
Level 2
490 Crown Street
Surry Hills NSW
2010 Australia
T 61 2 9380 9911
F 61 2 9380 9922
www.sjb.com.au

